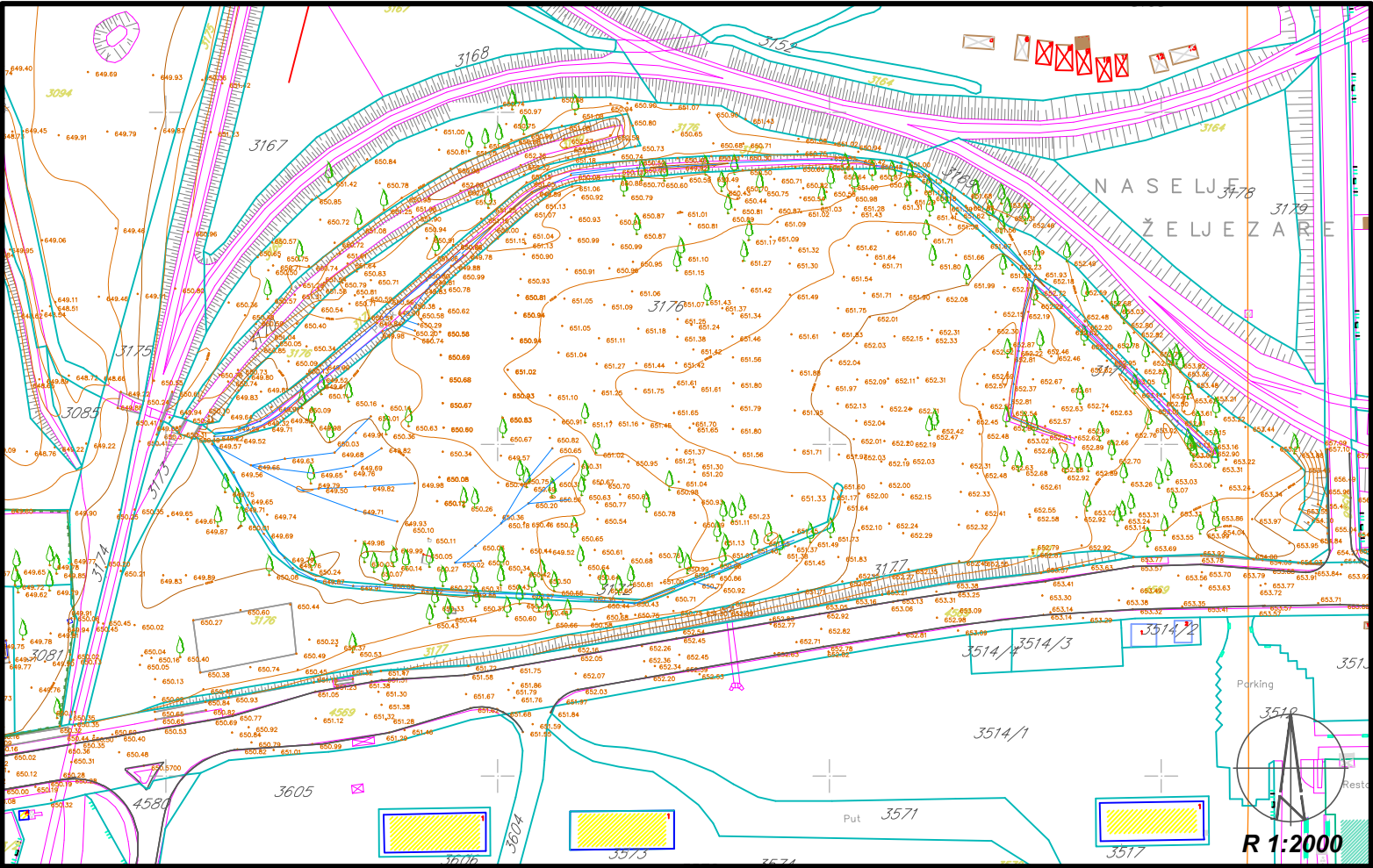
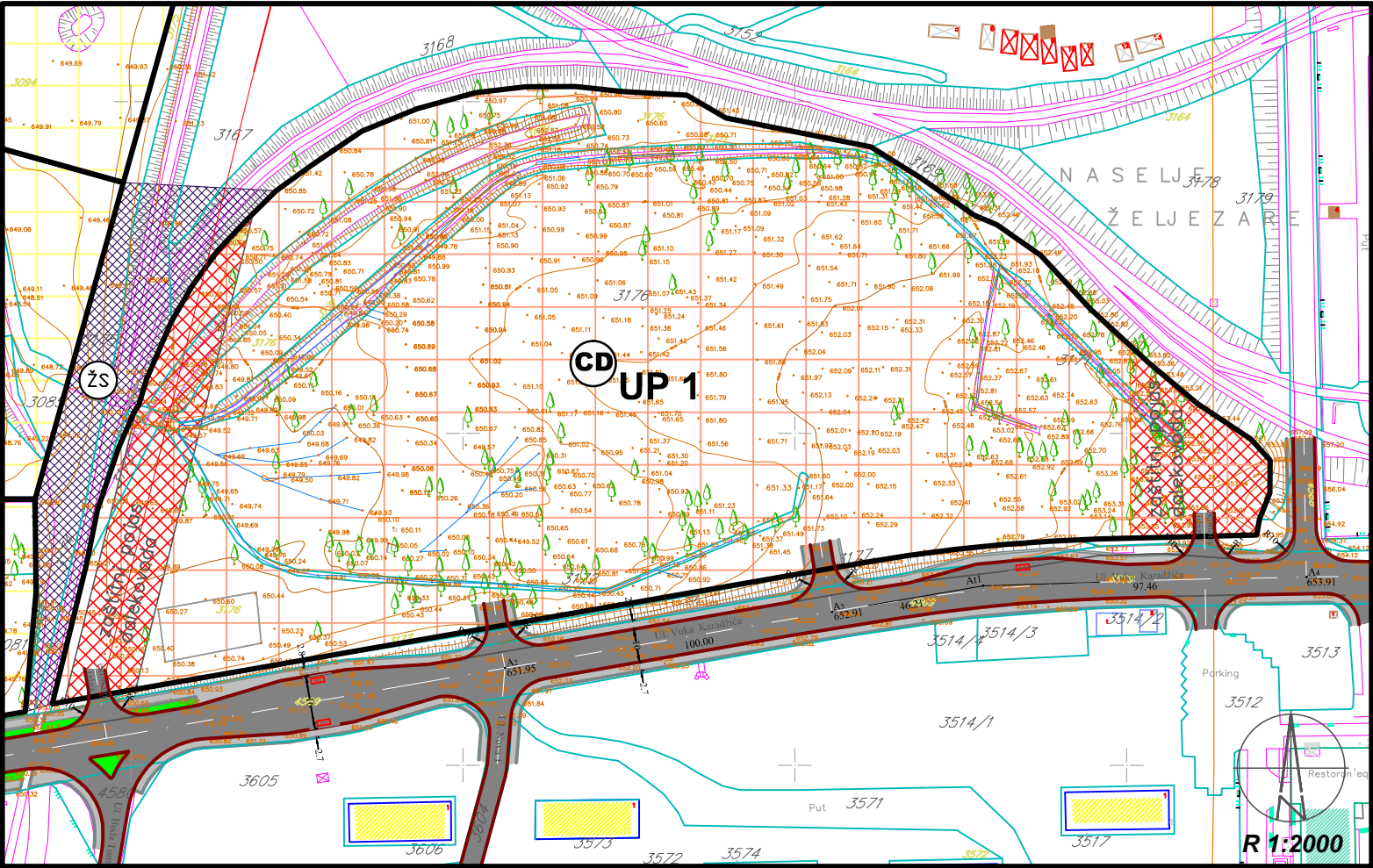


URBANISTIČKI USLOVI ZA CENTRALNE DJELATNOSTI

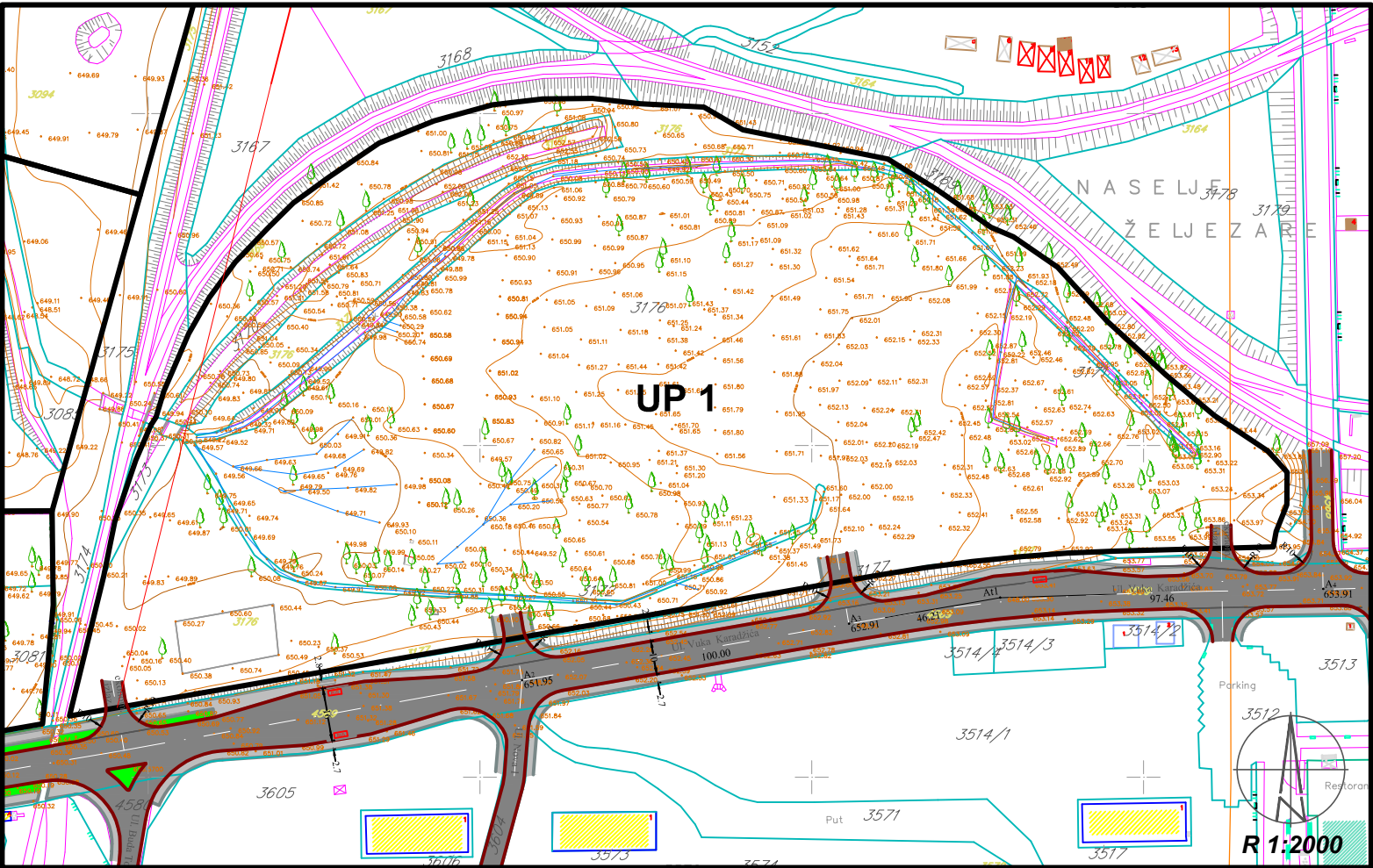
TOPOGRAFSKO KATASTARSKI PLAN



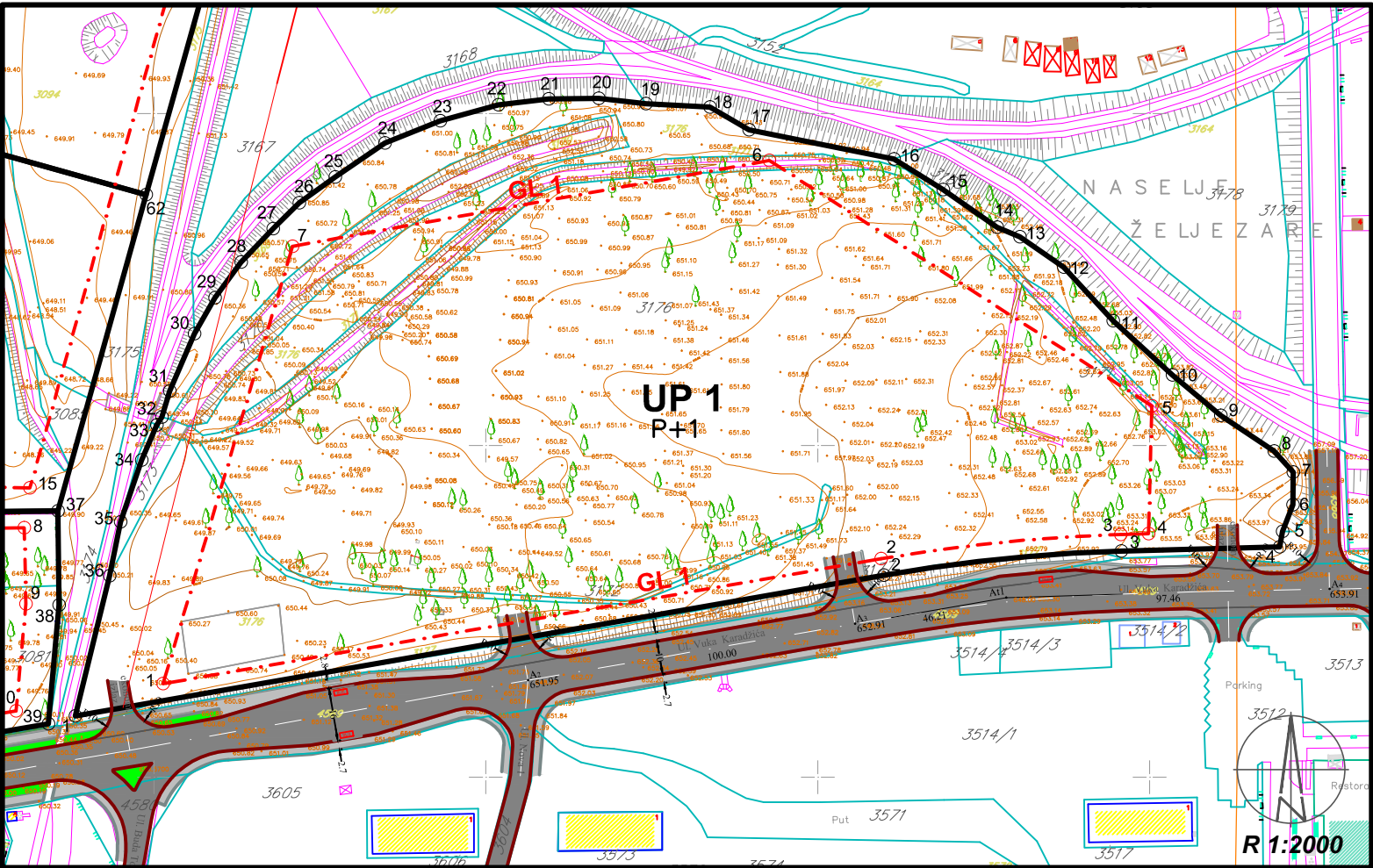
NAMJENA POVRŠINA



SAOBRAĆAJNA INFRASTRUKTURA



PLAN PARCELACIJE I REGULACIJE



LEGENDA

- GRANICA KATASTARSKE PARCELE
- OZNAKA KATASTARSKE PARCELE
- POVRŠINE ZA CENTRALNE DJELATNOSTI
- ŽELJEZNIČKI SAOBRAĆAJ - INDUSTRIJSKI KOLOSJEK
- URBANISTIČKA PARCELA
- OZNAKA UP
- GRADEVINSKA LINIJA
- SPRATNOST OBJEKTA

KOOORDINATE PRELOMNIH TAČAKA URB. PARCELE		
REDNI BROJ	X	Y
01	4737218.49	6579976.26
02	4737260.91	6580219.88
03	4737268.18	6580291.45
04	4737269.40	6580339.18
05	4737274.11	6580340.01
06	4737282.08	6580343.17
07	4737291.90	658343.27
08	4737298.27	6579337.53
09	4737309.02	6580321.38
10	4737323.21	6580306.81
11	4737337.60	6580288.96
12	4737353.69	6580274.12
13	4737362.88	6580260.85
14	4737365.79	6580254.06
15	4737377.12	6579237.81
16	4737386.33	6580222.94
17	4737395.11	6580179.25
18	4737401.95	6580167.48
19	4737403.00	6580148.18
20	4737404.57	6580133.98
21	4737404.43	6580111.92
22	4737218.49	6579976.26
23	4737397.83	6580086.23
24	4737391.11	6580069.60
25	4737054.57	6580380.94
26	4737373.14	6580043.75
27	4737365.33	6580035.88
28	4737355.23	6580026.26
29	4737344.49	6580018.39
30	4737333.68	6580012.16
31	4737316.43	6580004.71
32	4737308.53	6580002.35
33	4737306.18	6580000.85
34	4737295.57	6579996.23
35	4737276.98	6579989.93
36	4737260.67	6579986.64
KOOORDINATE PRELOMNIH TAČAKA GL		
REDNI BROJ	X	Y
01	4737228.18	6580002.75
02	4737265.83	6580219.03
03	4737273.18	6580291.31
04	4737273.39	6580299.69
05	4737311.92	6580300.67
06	4737385.86	6580185.41
07	4737360.02	6580041.76

Koordinate presjeka osovina saobraćajnica		
Tačka	Y	X
A1	6579773.289	4737170.168
A2	6580112.646	4737229.220
A3	6580211.191	4737246.217
A4	6580354.157	4737256.692
A5	6579844.922	4737371.570
A6	6579872.772	4737449.926
A7	6579890.149	4737559.939
A8	6579894.399	4737637.394
A9	6579898.211	4737706.857
A10	6579900.004	4737739.523
A11	6580076.581	4737692.944

Koordinate presjeka osovina tangen. saobrać.		
Tačka—At	Y	X
1	6580256.733	4737254.072
2	6579886.177	4737487.560
3	6579917.888	4737738.542
4	6580055.980	4737700.743

A11	A12
R= 505.000 Ec= 6580307.926 Nc= 4736750.445 Az1= 91d49'20.1" Az2= 99d47'9.5" L= 70.192	R= 300.000 Ec= 6579589.002 Nc= 4737547.266 Az1= 340d25'14.8" Az2= 356d51'32.7" L= 86.071

A13	A14
R= 40.000 Ec= 6579911.439 Nc= 4737698.836 Az1= 74d41'29.7" Az2= 86d51'32.7" L= 8.495	R= 50.000 Ec= 6580040.494 Nc= 4737653.142 Az1= 69d15'58.3" Az2= 74d41'29.7" L= 4.735